



# THE GRANITE BANNER

Published Quarterly by the New Hampshire Granite Region  
Antique Automobile Club of America



Vol. 1 No. 4

Winter Edition -- 2003

December, 2003

## Highlights in this issue:

1. Update on Mount Washington Auto Race 100th Anniversary Car Show
2. Canterbury Show with PALS
3. 'Put the Covers On' Event
4. Granite Region Officer Changes
5. Foliage Tour
6. History of license plates
7. Classified Ads
8. Tech Help Line

## It's On!!!.....

### **Mt. Washington Car Show Saturday, July 10, 2004**

A special mailing was sent to Granite Region members in September to determine the interest level in sponsoring and conducting a car show as part of the 100th anniversary of the first hill climb up the Mount Washington Auto Road. Due to the strong response, Club President Jack Armstrong contacted Tim Chapman at the M.W. Auto Road and confirmed that NH Granite Region would indeed conduct the antique car show. The volunteers tried to hold a meeting on December 6th in Manchester to plan the event and assign various duties. As was the case for most of 2003, the weather turned foul and the event had to be postponed due to all the snow, ice and wind. More about the show inside.

## 'Put the Covers On' Event A Warm Success



Granite Region members relax in the warm November 1st sun

Bedford, NH Mother Nature cooperated beautifully for the second attempt in 2003 to gather members of the Granite Region at the Griffiths home. The weather was the complete opposite of the early April snow and ice with temperatures in the mid-seventies, clear skies and the last hints of fall foliage.

Eighteen antique cars and nearly 40 members and guests drove from all over the state to enjoy a very nice day of conversation, information swapping and food, food, food. Sue Griffiths featured a cauldron of her finest homemade chili (which disappeared in about 10 minutes) and clam chowder. Sandwiches, salads, and of course many many desserts were brought by the attendees. We planned for a chill with hot food and inside activities, but were fooled again by the unpredictable, but this time positive, weather.

Cars ranged from the late 20's to early 70's with many beautiful and original antiques in between. Jack Griffiths provided each driver with a digital photo (or two) of their car to remember the day. All in all, a great time to meet other Granite Region members, and perhaps the start of an annual event.

October 27, 2003



NATIONAL ANTIQUE OLDSMOBILE CLUB  
SKY BORST, VICE PRESIDENT  
P.O. BOX 254  
CONCORD, NH 03302-0254

### 2003 Canterbury Shaker Village Meet

Assisted by: Profile Automobile League, Inc----( PALS )

Many thanks to all the Granite State Region AACA members that attended the 7<sup>th</sup> Annual meet on Saturday October 18, 2003. It all seemed to fall into place starting with a good weather forecast, and the excellent cooperation of the staff at Shaker Village. This is a truly great fun day with plenty of good food, lots of cars to view, conversations with old and new friends, and of course the exhibits and surroundings of the Shaker Village. Our car count was 162, up from 125 last year and 52 five years ago; hopefully we might have 200 next year. The total count of people on the grounds for the day was in excess of 1,000; car people and the general public. The museum was most pleased.

Yes----The 8<sup>th</sup> annual meet is already in the planning-  
Please mark your calendars now for SATURDAY---OCTOBER 16, 2004

HOPE TO SEE YOU ALL NEXT YEAR

Sky and Dot Borst  
PALS

A handwritten signature in black ink, appearing to read "Sky", with a long, sweeping underline that extends downwards and to the right.

Granite State Region AACA



Jim Lowrey's Studebaker President shining in the clear blue skies at Canterbury Show



Musicians entertain the large crowd of drivers and spectators at Canterbury Show

# Tag Along

by Gerry Griffin

## NH County License Plates and the Interim Issues

Most of us interested in old autos are familiar with the County System of license plate numbering that New Hampshire introduced in 1949. We are either old enough to remember County Plates or we have seen County Plates on antique vehicles or at local flea markets.

Under the County System those with numbers under 10,000 retained their number, all others received plates with two letters followed by one to three numbers, later expanded to four. On County Plates, an initial letter indicated the registrant's county of residence. The second letter had no significance other than to allow more combinations than a numeric character would have otherwise allowed. Early County Plates through 1953 had the letters stacked over one another.

To understand the appeal of the County System, it is helpful to consider how the ownership of a car was traced in the days before computers and widespread communications. Registration lists were compiled and circulated to authorities. The 1905 list was just a few pages long, but by 1948, the list was an enormous document that did not lend itself to be carried around in a police car. The County System made the list user friendly, allowing it to be broken up into 'County Volumes'. A local volume could easily be carried in a cruiser. The police particularly liked the system as it allowed them to identify people who were not residents of the local area.

Initially each county was identified by a single letter, but as the State grew and the southern counties exceeded the number of available letter- number combinations, additional letters had to be assigned to these more populated counties. The counties and their initial letters under the County System are as follows:

B - Belknap	C - Carroll	E, Z - Cheshire
O - Coos	G - Grafton	H, I, L, J - Hillsboro
M, N - Merrimack	R, K, P - Rockingham	F, D - Strafford
		S- Sullivan

By 1973, the system was showing the stresses of growth. An additional fourth numeric was accommodated by reducing the size of the letters and returning to a stacked letter format. This made the plate harder to read and sometime during the production of the 1975 base plate, the dies were narrowed to allow six characters in sequence on the now standard 6 by 12 inch plate. Even this change did not relieve the stresses of growth. The 1975 base plate was renewed with the now familiar expiration stickers and the transition to birth month renewals which took place in 1976.

By then, the system was beginning to break down. New registrants were often receiving plates with another county's initial letter. Coos county plates began to appear in the southern counties. It was clear the County System needed to be replaced and despite some limited production of reflective plates, the State was not ready for full production of a totally new issue.

## **Tag Along** (continued)

The solution was a transition that involved an 'Interim Issue'. That transition from the County Plate System to the current system of undated base plates, renewed with month and year stickers, is one of the most interesting stories in New Hampshire automotive history. In December of 1977 a new undated base plate was issued to new registrants only. Issued in the 1975 narrow die County Format of two full sized letters in sequence with up to four numbers, these plates all started with the letter "X" and ran from "XA" to "XN."

Initially the plates were produced with red letters on a white background. All were issued as singles only. In a State with a tradition of pairs of Green and White license plates, the new issue caused more than a little confusion. The Red on White seemed particularly offensive and lead to confusion with the historical colors of a neighboring state to our south. In April 1978, only a few months after their introduction, all unissued Interim plates were recalled, sent back to the prison, and repainted a more traditional Green on White.

All "XA" plates with red letters had been issued by the time of the recall. No over painted "XA" plates are known. All "XF" through "XN" plates have green letters. Plates beginning with "XB" through "XE" can be found with either red or green letters. These plates were made with red letters, but all unissued ones were recalled and overprinted with green letters. No red "XF" plates are known, but all show that they were manufactured in red and over painted in green. They probably never left the prison before being repainted. The last of the red lettered plates were issued in April 1978. Green lettered plates continued to be issued until the introduction of the 1979 reflective series.

There are no pairs of the interim series, only single plates were issued. This in itself caused confusion as the 1975 County base plate was issued in pairs, as were the expiration stickers. The problem was solved by applying both stickers to the single Interim Plate these validation stickers generally both appear, on the single Interim plate, in the upper corners.

If you have a car manufactured from 1949 through 1977, a New Hampshire County plate with your County's initial letter is appropriate. If your car was produced between December 1977 and mid 1979, you have a great opportunity to tag it with an Interim issue. If the car fails to draw attention and questions, I guarantee the Interim plate will.

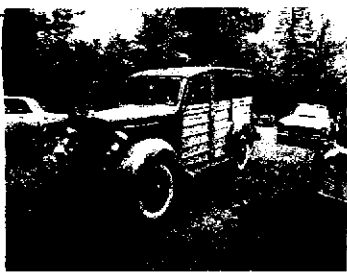
Gerry

### **Tech Notes:**

#### Question:

Sometimes at car shows or other events, I have parked under pine trees only to find sap has dropped onto my fine collector automobile. The spots are usually about the size of a nickel and are very hard to remove. If left on the finish for almost any amount of time (a week or so), the spots glaze over and are even more difficult to remove. Does anyone in the Granite Region club have any hints on how to remove the sap without damaging the delicate finish? [Other than: "Don't park under the tree.]"

Editor's Note: If anyone has a process or product to recommend, please reply to (603) 472-4990 or to [jackdgriffiths@hotmail.com](mailto:jackdgriffiths@hotmail.com)



# Back Road Notes...

A Message from the President

Jack Armstrong



A Recap.....

As the first year for the Granite Region of AACA winds down, Pat and I would like to wish all members a happy holiday season and healthy new year. The past 12 months have been both productive and enjoyable. We were thrilled to accept the charter for our chapter last February at the AACA Annual Meeting. Current plans are to attend the next Annual Meeting February 13 and 14, 2004. For years Mike Jones (a Granite Region member) has done an outstanding job of organizing and conducting this excellent meeting and we are looking forward to the workshops, seminars, trade shows and camaraderie at the forthcoming meeting in Philadelphia.

As noted in prior newsletters, the various meetings and shows held throughout the year were most enjoyable and well attended, despite some challenging weather conditions. The Granite Region's first annual meeting in May, Jonathan James' kick-off show at the Tilton School, the mini-tour to John Moir's superb A-Z collection, the Fall Foliage Tour and the Canterbury Show, just to name a few were all fun gatherings. Most will be repeated next year and I hope you will mark your calendars early and attend as many shows as you can.

Our December 6th meeting to plan the July 10, 2004 Mount Washington 100th Anniversary Hill Climb Car Show had to be postponed for snowy weather reasons, however we will reschedule for early 2004 to plan the show and assign the various tasks required for this type of event. If you are interested in participating as a show volunteer and/or driver, please contact me by phone or email.

Sadly, it is time to put our treasured antiques away during the cold and snowy weather. But, this is the time to repair, refurbish, polish and clean our beauties for the next driving season which will be here before we know it. In the meantime, once again, best wishes to all members for a happy and safe 2004!

**Would You Like to Host the Granite Region Annual Meeting on Saturday, May 22, 2004?**  
We had a great time at Jack and Pat Armstrong's home in 2003. With the objective of moving the meeting around the state, perhaps you would like to have the meeting in your locale. If you have a suggestion for the meeting, please contact Jack Armstrong or Jack Griffiths with your idea.

## CHANGES IN THE OFFICER SLATE

In order to involve more members in the process of conducting the activities of the New Hampshire Granite Region of AACA, there have been some changes in the officer positions. Gerry Griffin will serve as Treasurer and Judy Wildman takes over as Secretary in January, 2004. Jack Griffiths moves to Membership Chairman and tri-editor of the Granite Banner Newsletter. Here's the new line-up:

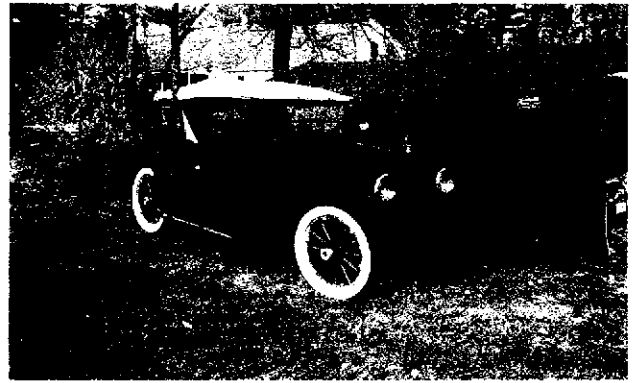
President:	Jack Armstrong	279-0996	jcarbarn@aol.com
Vice-President:	Jonathan James	279-8603	
Treasurer:	Gerry Griffin	673-7467	gerald.griffin@worldnet.att.net
Secretary:	Judy Wildman	225-9266	
Member-at-Large:	Gary Rondeau	644-7238	syncroring@comcast.net
Membership:	Jack Griffiths	472-4990	jackdgriffiths@hotmail.com
Newsletter:	Carol Hoagland; Warren Clark; Jack Griffiths		

# Granite Banner Classified Ads

Free to Granite Region members: Send your ad to Jack Griffiths



**1954 Ford F-1 Pick Up.** Red. V-8 (first year for overhead valve). 3-Speed with overdrive. Wood bed. New WWW. Superb restoration. \$29,500 (603) 472-5732



**1921 Packard** Single Six Roadster. Black. Nice original condition. Runs Great. High \$20's. Call Rick: (603) 627-3025



**1964 Ford Galaxie 500 XL Convertible.** White, red interior. Rebuilt and detailed engine. Rebuilt automatic transmission. Working air conditioning. California car. Excellent condition. \$18,500 (603) 472-4990

**Automobilia:** Old magazines, books, maps and other great stuff for sale. 1900's to modern day. Original ads and auto promotionals. Some service manuals. It was time to sort through my attic, den and barn. Send me your email address and I will email you the lists (23 pages)

Bob Merrill: (603) 471-9111  
ROBTLMERRILL@HOTMAIL.COM

**Wanted: License Plates:** Particularly old and unusual NH Plates. No lot too large. I also have many plates in stock, so if you are looking for a particular year for your collector car, please give me a call.

Gerry Griffin (603) 673-7467  
P.O. Box 183, Mont Vernon, NH 03057-0183  
gerald.griffin@worldnet.att.net

Editor's note: See Gerry's excellent article in this newsletter.

## Check the Granite Region Website

WWW.AACA.ORG/GRANITE

Andy Daubenspeck and Warren Clark continue to improve the website. Check in for region photos. If you have articles, photos or announcements, send them to:  
Andy [andy.daubenspeck@dartmouth.edu] or Warren [warren@sagecliff.com]

## **Fall Foliage Classic 2003 – A success despite the weather!**

### **"A LINCOLN OWNERS CLUB AND GRANITE REGION TOUR"**

By Bart Carlson

The NH White Mountains Fall Foliage Tour came off without a hitch over the weekend of September 27<sup>th</sup> despite the ominous weather forecasts and the later-than-normal changing colors.

The Lincolns and other classic cars began arriving in Melvin Village, NH, about mid-afternoon on Friday. Some of their owners and passengers participated in a photo session in front of Bart Carlson's Village Old Car Shop while others inspected the collection of cars and were treated to light refreshments. Then to the Carlson's home for a casual dinner and to renew old friendships and make new ones too! As the evening drew to a close, the tour books were distributed and all drivers were instructed to be ready to leave at 9:15 am on Saturday with a full tank of gas.

Fifteen cars and 36 people were registered for the tour, including eight Lincolns. New LOC member, Steve Pisarczyk, drove his 1931 sport phaeton about 175 miles from southern Massachusetts, Joe Rogers brought his 1931 Derham Convertible from Pennsylvania, and Alan Miller and Ray Theriault traveled from Connecticut. The host location, tiny Melvin Village, NH, was well represented with three Lincolns—Bart Carlson's 1931 sport phaeton, Richie Clyne's 1932 KA Murphy body dual cowl phaeton, and Mark Smith's 1932 KB Judkins coupe. Other vehicles on the tour included two 1929 Bentleys, two Studebaker President convertibles, a 1931 Cadillac phaeton, a 1941 Lincoln Continental and a 1931 Franklin. About half the tour cars were driven by Granite Region members.

Saturday's foliage tour featured as much variation in weather as it did in changing foliage. We traveled through mist, fog, overcast, bright sunshine, great views of mountains and vistas as well as no views of sights highlighted in our tour book. We didn't see a moose, but almost wiped out a flock of wild turkeys! Two passengers who started out in a rumble seat switched to the back seat of Joe Roger's all-weather phaeton (how prophetic!), but the open Bentley covered the entire 200 miles with the top down!

As we approached our luncheon destination in Whitefield, NH, the sun was bright and the view spectacular. The buffet lunch was great too! The beautiful Lincolns and other classics parked in front of the Mountain View Grand Resort and Spa were even more impressive than the bridal party sharing the facilities with our tour.

After lunch, we drove through a mix of weather again, arriving at the home and car barn of LOC member Jack Armstrong without incident—if you don't count the fact that Joe Rogers ran out of gas. It seems he didn't get the word about filling up before starting out and then again after lunch in Whitefield, but it didn't take him long to remember that his Lincoln had a reserve tank and he made it to the next gas station. At the Armstrong's we were treated to cookies, apples and cider as we inspected the beautiful new barn and the cars inside.

The long day ended with a nice dinner in Wolfeboro, NH, at the Lakeview Inn. Weather was among the topics of discussion, but everyone seemed to be looking forward to a short tour on Sunday. As it turned out, the rain held off and we saw a few vistas, the Ossipee Mountains and Lake Winnepesaukee as we followed back roads to the Wolfeboro Inn for a more-than-you-could-eat buffet brunch. After lunch, as the group returned to load their trailers and head for home, there were a lot of long good byes and talk of getting together again next year.

**Update on two-year inspections**---The following email was received from William H. Lenharth: "I am a professor at UNH working on a project with the NH State Police and MV people. I checked into the two-year inspections for antique cars 40+ years old. According to the MV department, all inspection stations should have stickers good for two years on hand to put on our antique cars and that using the two-year stickers is [the] proper way to implement the law."

## **Mount Washington 100th Anniversary Hill Climb**

### **Granite Region Car Show Update...**

The meeting scheduled for December 6, 2003 in Manchester to plan next July's Antique Car Show was cancelled due to the "Blizzard of '03". Some 30 members and spouses had planned to attend, but prudence prevailed and the snowfall and dangerous driving conditions forced the postponement to (probably) January, 2004. The Mt. Washington show promises to be an outstanding multi-day event with vintage races up the mountain road, Stanley Steamers, exhibitions, fireworks, receptions, and of course the Granite Region Car Show.

We still need volunteers, both for ideas and for participation. Below are important details of the show. Please take a few minutes to consider the contributions you can make to assure this will be one of the major highlights of the 2004 antique car season. Here are the major topics:

- >Judging [classes and criteria]
- >Advertising and Promotion
- >Lodging in the area
- >Field layout [marques, years, types]
- >Entrance Fees and Registration
- >Dash plaques and awards

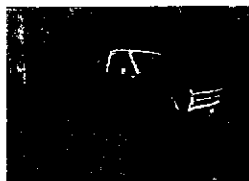
Send an email, a letter, or otherwise contact President Jack Armstrong if you would like to volunteer, if you have any helpful ideas or if you can promote the show in any way.

### **FUTURE EVENTS: MARK YOUR CALENDARS EARLY!**

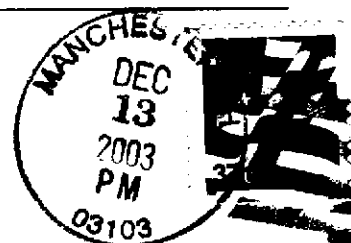
AACA National Annual Meeting: February 13-14, 2004 Philadelphia, PA

Granite Region Annual Meeting: May 22, 2004 [Location to be determined]

Tilton School Antique Automobile Show : June 26, 2004 Tilton, NH



THE GRANITE BANNER  
GRANITE REGION--AACA  
27 Seton Drive  
Bedford, NH 03110



Andrew Daubenspeck  
351 Poverty Lane  
Lebanon, NH 3766